



(2504B, 2505)
MODEL **KW-45G, GL**

IMPACT WRENCH

1 " SQ. DRIVE



KW-45G



KW-45GL

FEATURES:

- Mighty torque performance for all heavy duty works.
- Excellent durability.
- Well-balanced for easy handling.
- Simplified power regulator and reverse mechanism.
- Grip handle with inside trigger is available as optional.

APPLICATIONS:

Heavy duty work on all types of over road truck equipments. Mill and mine applications. All earth moving equipments. Road construction equipments, Shipbuilding. Automotive service:

Truck and Trailer wheel nuts, U-Bolts, Heavy duty nuts for wheels.

Industrial work:

Construction machinery, Shipbuilding, Steel fabrication, Heavy duty industrial engine service.

SPECIFICATIONS: (Performance figures are at 0.62 MPa(Pe) (90 P.S.I.) air pressure.)

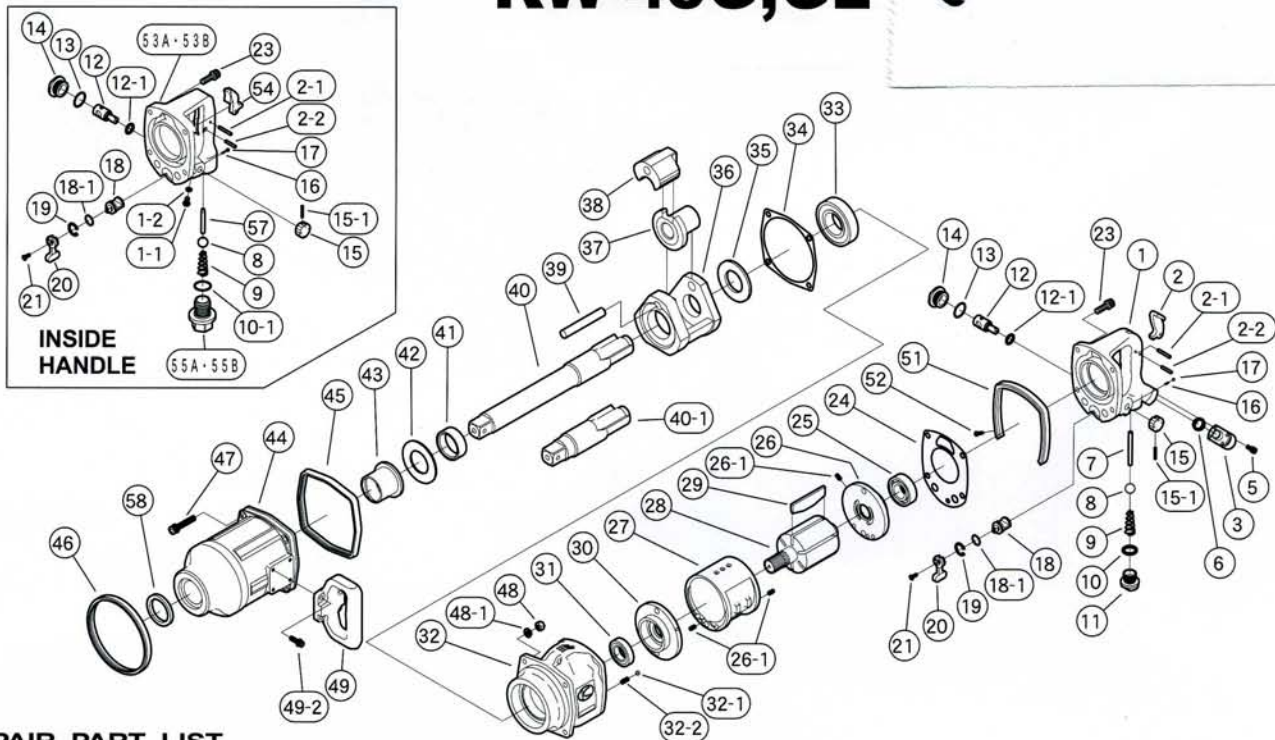
Capacity Of Bolt Size.	45 mm	1-3/4 "
Impact Per Min.	600	
Free Speed R.P.M.	3,000	
Length : KW-45G	413 mm	16 - 5/16 "
KW-45GL	580 mm	22 - 7/ 8 "
Weight : KW-45G	15.3 kg	33.7 lbs
KW-45GL	16.7 kg	36.7 lbs
Air Consumption.	0.75 m ³ /min	26.7 c.f.m.
Hose Size	12.7 mm	1/2"
Air Inlet Thread Size.	1/2 " *	
Air Pressure	0.62 MPa(Pe)	90 P.S.I.

*IMPORTANT : P.T. or N.P.T. for your choice.

EXPLODED VIEW

KW-45G, GL

(2504B, 2505)



REPAIR PART LIST

REF. NO. ON DRAW.	PART NUMBER	PART NAME	QTY.	REF. NO. ON DRAW.	PART NUMBER	PART NAME	QTY.
1	0142080B	Handle C.P.	1	32-1	Z0106D	Steel Ball	1
2	0132117D	Throttle Lever	1	32-2	0132991	Knock Spring	1
2-1	Z0614×28	Pin	1	33	Z0016208Z	Ball Bearing	1
2-2	Z0614×22	Pin	1	34	0345207	Impact Gasket	1
3	0345290	Inlet Bushing	1	35	0142025	Spacer	1
5	Z0665×12A	Bolt	4	36	0142026B	Impact Cage	1
6	Z040P16	"O" Ring	1	37	0142027B	Cam	1
7	0142013B	Throttle Valve Pin	1	38	0142028	Hammer	1
8	Z0115/8D	Throttle Valve Ball	1	39	0142019	Hammer Pin	1
9	0132190	Throttle Spring	1	40	0142030	Anvil	1
10	Z040P20	"O" Ring	1	40-1	0142030G	"G" Anvil	1
11	0132150	Plug	1	41	0142031	Cage Bushing	1
12	0446017	Regulating Valve	1	42	0142034	Thrust Plate	1
12-1	Z040P14	"O" Ring	1	43	0132132	Spindle Bushing	1
13	Z041S26	"O" Ring	1	44	0142082B	Impact Housing C.P.	1
14	04460391	Plug	1	45	0142071	Rear Protector	1
15	0442314	Regulating Valve Knob	1	46	0345270	Front Protector	1
15-1	Z0563×22	Pin	1	47	Z0668×45A	Bolt	4
16	0114193	Knock Spring	1	48	Z0918	Lock Nut	4
17	Z0104D	Steel Ball	1	48-1	Z0968×1	Washer	4
18	0142015B	Reverse Valve	1	49	0132104	"D" Handle	1
18-1	Z041S18	"O" Ring	1	49-2	Z0666×20A	Bolt	4
19	Z03121	Retainer Ring	1	51	0142041BH	Protect Rubber	1
20	0132915	Reverse Lever	1	52	Z0804×12	Screw	2
21	Z0674×12	Screw	1	58	Z01742556	Oil Seal	1
23	Z0668×25A	Bolt	4	PART FOR INSIDE HANDLE			
24	0142006B	Motor Gasket	1	1-1	Z0846×10	Screw	1
25	Z0016205	Ball Bearing	1	1-2	Z040P6	"O" Ring	1
26	0132124	Rear End Plate	1	10-1	Z040P28J	"O" Ring	1
26-1	Z0565×10	Pin	3	53A	0550180BNS	Handle C. P. (NPT)	1
27	0140509	Cylinder	1	53B	0550180BTS	Handle C. P. (PT)	1
28	01420211	Rotor	1	54	0345417	Throttle Lever	1
29	0140512	Rotor Blade	6	55A	0132919NiS	Inlet Bushing (NPT)	1
30	0132124	Front End Plate	1	55B	0132919iS	Inlet Bushing (PT)	1
31	Z0016205Z	Ball Bearing	1	57	0550113BT	Throttle Valve Pin	1
32	0142081BH	Motor Case C.P.	1				