



K&E TOOLS

Division of Railhead Corporation
10721 S. Western Ave. ~ Chicago, IL 60643-3135
Phone 773-779-2400 ~ Fax 773-779-0231
www.ketools.com

MODEL KE-500EX 1/2" Square Drive Impact Wrench



SPECIFICATIONS:

Bolt capacity..... 5/8"
Maximum Torque.....500 ft. lbs.
Working Torque.....40-350 ft. lbs.
Speed..... 6,000 R.P.M.
Weight.....5 5/8 lbs.
Length.....7 1/4"
Air consumption.....10.1 l/s
Air inlet thread size.....1/4"
Air pressure.....90 P.S.I.

OPERATING & MAINTENANCE:

1. Use of filter and lubricator assembly is recommended to insure proper functioning and long life.
2. Before starting tool each day, blow air hose out prior to attaching to the tool to prevent dirt and water from entering tool.
3. Air Supply. Always use clean, dry compressed air to obtain utmost efficiency. Tool should be operated at 90 P.S.I.
4. Check rotor blades for wear, in the event that the tool is gradually losing power and all other operating conditions are proper.
5. Be sure to use the proper size air hose.

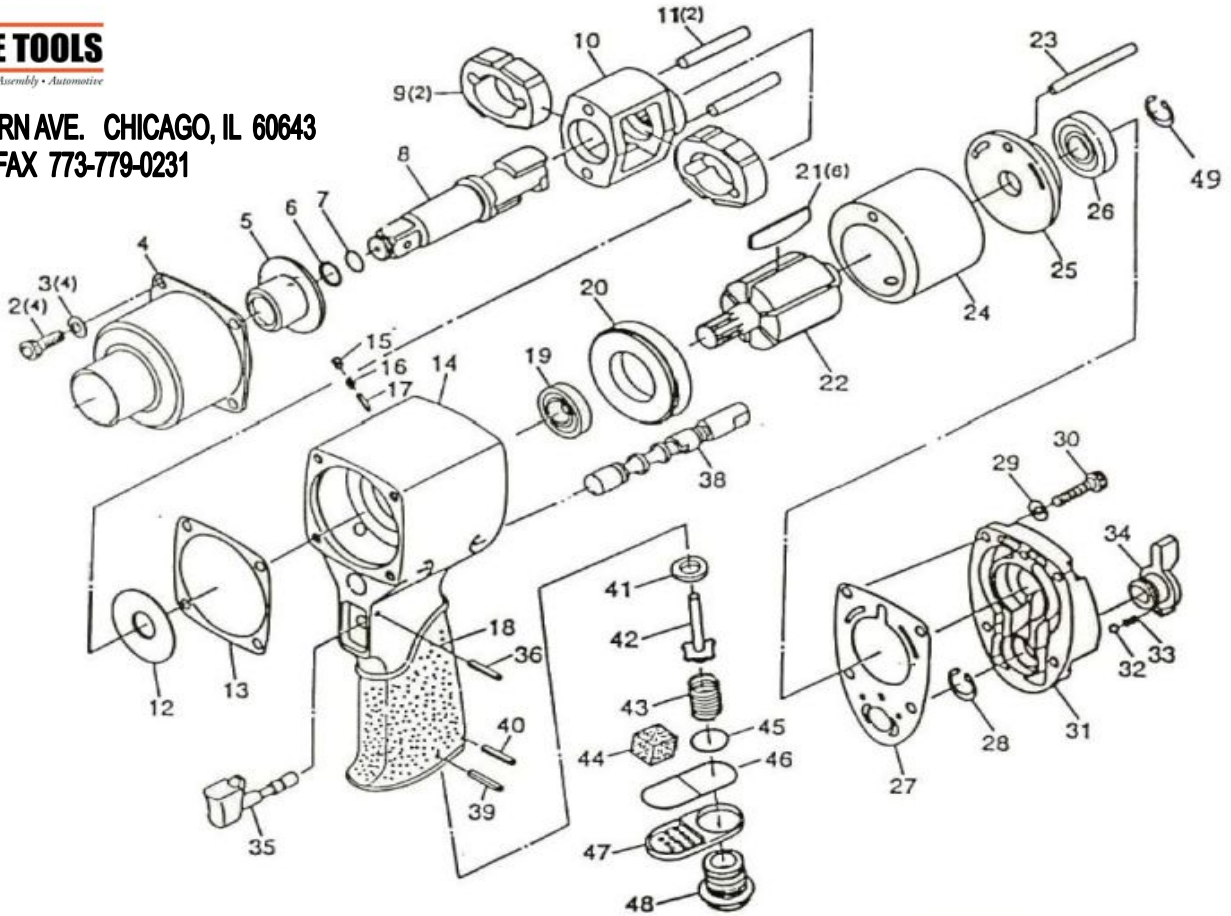
IMPORTANT:

OIL DAILY. FIRST IN THE MORNING AND JUST BEFORE END OF DAY. USE A GOOD GRADE SPINDLE OIL OR SPECIAL AIR MOTOR OIL.

Model KE-500EX



10721 S. WESTERN AVE. CHICAGO, IL 60643
 800-235-1782 FAX 773-779-0231



REF. #	Part Number	PART NAME	QTY	REF. #	Part Number	PART NAME	QTY
2	500EX02	Screw	4	26	500EX26	Ball Bearing	1
3	500EX03	Spring Washer	4	27	500EX27	Gasket	1
4	500EX04	Hammer Case Assembly	(include 1,5)	28	500EX28	Snap Ring	1
5	500EX05	Hammer Case Bushing	1	29	500EX29	Spring Washer	4
6	500EX06	Retainer Ring	1	30	500EX30	Screw	4
7	500EX07	O Ring	1	31	500EX31	Housing Cover	1
8	500EX08	1/2" Anvil Shank	1	32	500EX32	Steel Ball	1
9	500EX09	Hammer	2	33	500EX33	Spring	1
10	500EX10	Hammer Frame	1	34	500EX34	Regulator Lever	1
11	500EX11	Hammer Pin	2	35	500EX35	Trigger	1
12	500EX12	Spacer	1	36	500EX36	Trigger Stop In	1
13	500EX13	Gasket	1	37	500EX37	O Ring	1
14	500EX14	Motor Housing	1	38	500EX38	Reverse Valve	1
15	500EX15	Set Screw	1	39	500EX39	Spring Pin	1
16	500EX16	Spring	1	40	500EX40	Spring Pin	1
17	500EX17	Reverse Valve Pin	1	41	500EX41	Valve Seat	1
18	500EX18	Handle Cover	1	42	500EX42	Valve	1
19	500EX19	Ball Bearing	1	43	500EX43	Valve Spring	1
20	500EX20	Front End Plate	1	44	500EX44	Muffler Foam	1
21	500EX21	Rotor Blade	6	45	500EX45	O Ring	1
22	500EX22	Rotor	1	46	500EX46	Deflector Gasket	1
23	500EX23	Dowel Pin	1	47	500EX47	Deflector	1
24	500EX24	Cylinder	1	48	500EX48	Swivel Inlet Bushing	1
25	500EX25	Rear End Plate	1	49	500EX49	Snap Ring	1