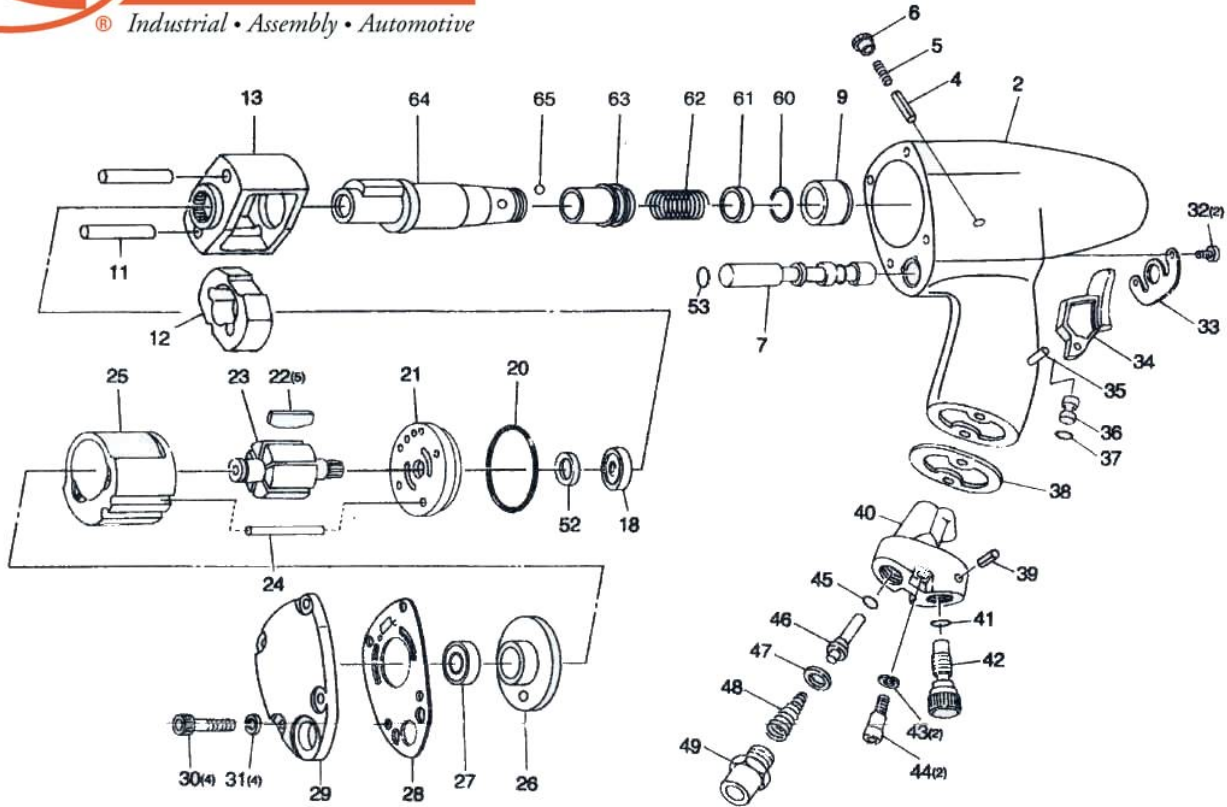


1/4" Hex. IMPACT DRIVER



PARTS LIST

Index No.	Parts No.	Description	Qty. Per tool
2	826H02	Motor Housing	1
4	826H04	Reverse Valve Pin	1
5	826H05	Reverse Valve Spring	1
6	826H06	Set Screw	1
7	826H07	Reverse Valve	1
9	826H09	Housing Bushing	1
11	826H11	Hammer Pin	2
12	826H12	Hammer	1
13	826H13	Hammer Frame	1
18	826H18	Ball Bearing	1
20	826H20	"O" Ring	1
21	826H21	Front End Plate	1
22	826H22	Rotor Blade	5
23	826H23	Rotor	1
24	826H24	Motor Pin	1
25	826H25	Cylinder	1
26	826H26	Rear End Plate	1
27	826H27	Ball Bearing	1
28	826H28	Gasket	1
29	826H29	Head Cover	1
30	826H30	Cap Screw	1
31	826H31	Spring	1
32	826H32	Screw	2
33	826H33	Exhaust Cover	1
34	826H34	Trigger	1
35	826H35	Roll Pin	1

Index No.	Parts No.	Description	Qty. Per tool
36	826H36	Push Pin	1
37	826H37	"O" Ring	1
38	826H38	Valve Block Gasket	1
39	826H39	Roll Pin	1
40	826H40	Valve Block	1
41	826H41	"O" Ring	1
42	826H42	Regulator	1
43	826H43	Spring Washer	2
44	826H44	Cap Screw	2
45	826H45	"O" Ring	1
46	826H46	Throttle Valve	1
47	826H47	"O" Ring Retainer	1
48	826H48	Throttle Valve Spring	1
49	826H49	Inlet Bushing	1
52	826H52	Oil Seal	1
53	826H53	"O" Ring	1
60	826H60	Retaining Ring	1
61	826H61	Washer	1
62	826H62	Quick Change Spring	1
63	826H63	Change Sleeve	1
64	826H64	Spindle (Double Bit Type)	1
65	826H65	Steel Ball	1

The types and specifications may be changed without notice.



Division of **Railhead Corporation**
 10721 S. Western Ave. ~ Chicago, IL 60643-3135
 Phone 773-779-2400 ~ Fax 773-779-0231
www.ketools.com

MODEL KE-600QC
1/4" Quick Change Impact Wrench
JUMBO HAMMER



SPECIFICATIONS:

Bolt capacity.....3/8"
 Working Torque.....5 - 30 ft. lbs
 Maximum Torque.....50 ft. lbs.
 Speed.....16,000 R.P.M.
 Impacts per minute1800
 Weight.....1 1/2 lbs.
 Length.....4 3/4"
 Hose Size3/8"
 Air consumption.....2 C.F.M.
 Air inlet thread size.....1/4" N.P.T.
 Air pressure.....88 P.S.I.

IMPORTANT:
OIL DAILY. FIRST IN THE MORNING AND JUST BEFORE END OF DAY. USE A GOOD GRADE SPINDLE OIL OR SPECIAL AIR MOTOR OIL.

OPERATING & MAINTENANCE:

1. Use of filter and lubricator assembly is recommended to insure proper functioning and long life.
2. The grease in the impact mechanism should be changed after every 40 hours of operation.
3. Before starting tool in operation, blow hose out prior to attaching to the tool to prevent dirt and water from entering tool.
4. If a bolt or nut can not be loosened or tightened to proper torque after five seconds of impacting, a larger size wrench is needed for the job. This is an indication of:
 - a. Low air pressure or volume.
 - b. Improper application of wrench.
 - c. Worn out socket.
5. Do not use sockets that are too large for the capacity of the tool. This will wear or break the square drive spindle prematurely.
6. Check rotor blades for wear in the event the tool is gradually losing power and all other operating conditions are proper.